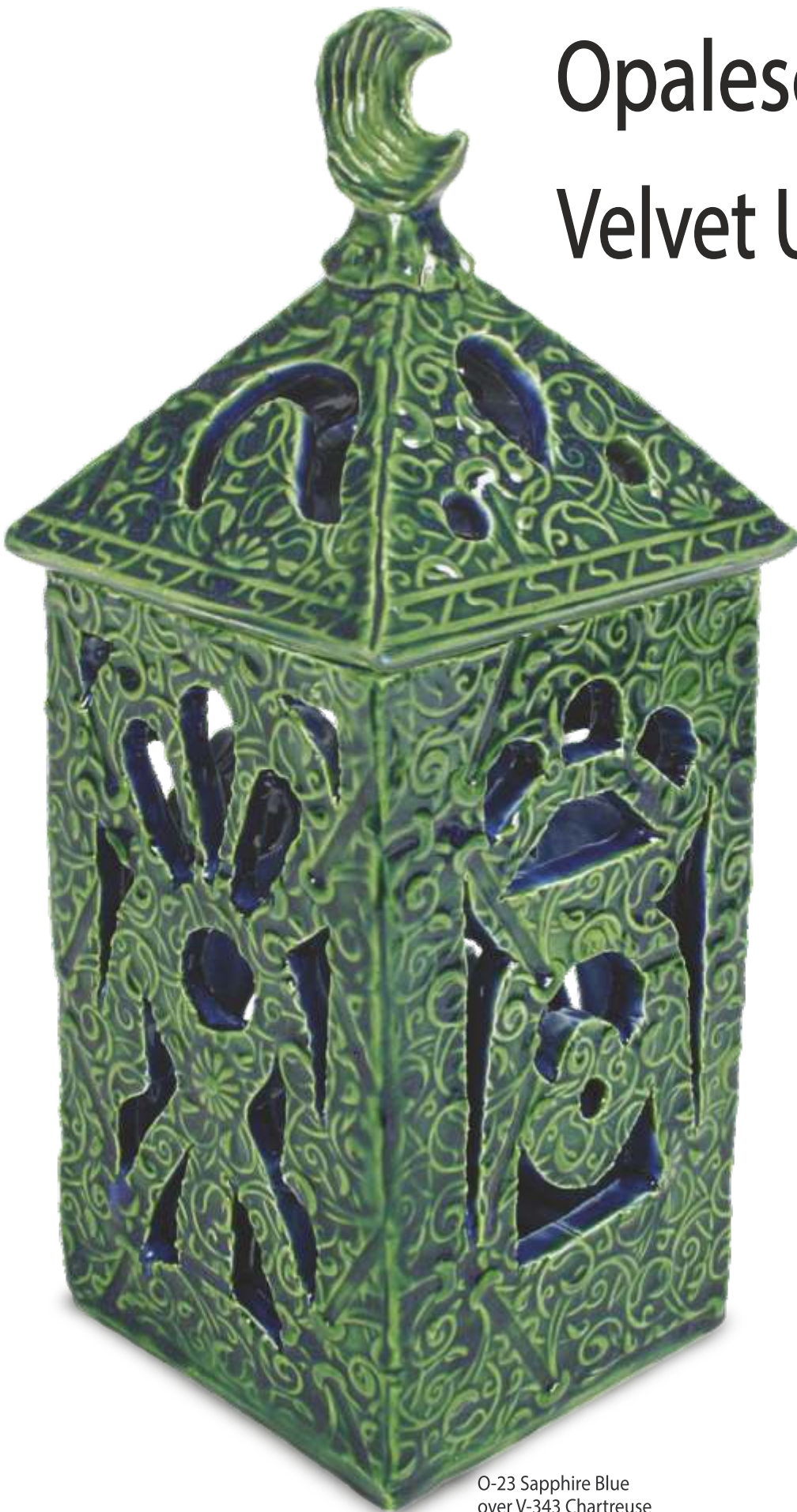


Opalescent Glazes or Velvet Underglazes



Low Fire
Layering

O-23 Sapphire Blue
over V-343 Chartreuse



Americas Most Trusted Glazes

Application Notes

Application Notes

Opalescent glazes are soft, high gloss, low fire float glazes that are formulated to flow and pool in texture. Layer them over a complementary or contrasting underglaze color for an easy way to create a dramatic color effect.

Apply one coat of AMACO® Velvet or LUG underglaze to any Cone 04 bisque fired form that has surface texture. Then apply three coats of an Opalescent glaze. (Allow each coat to dry.)

Glaze fire to Cone 05.

(These test tiles were made using AMACO® Textured Slab Molds.)

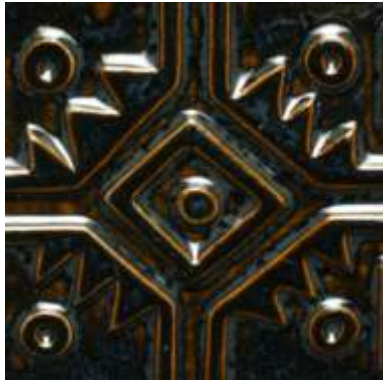
Informace o aplikaci:

Opalescent glazury jsou vykreslující glazury s vysokým leskem, pro nízký výpal, které jsou formulovány tak, aby průtok a bazén texturou.

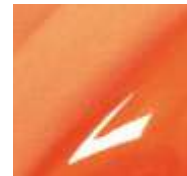
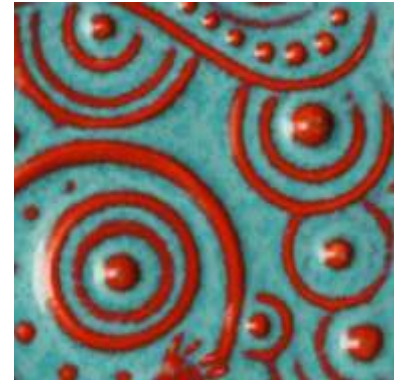
Jedná se o snadný způsob, jak díky vrstvení podglazurních barev, dochází k vytvoření dramatického barevného efektu.

Naneste jednu vrstvu **Velvet bezolovnaté podglazurové barvy** na jakýkoliv Cone 04 přezahnutý střep, který má texturní povrch. Poté naneste tři vrstvy **Opalescent glazury**.

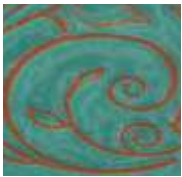
Vypalte glazury Cone 05 (1040-1060°C).



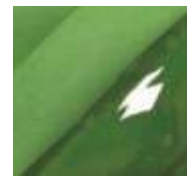
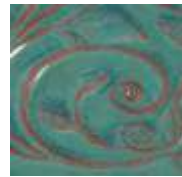
O-2 Black Tulip over
V-390 Bright Orange



O-20 Bluebell over
V-389 Flame Orange



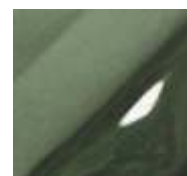
O-21 Aquamarine over
V-382 Red



O-26 Turquoise over
V-353 Dark Green



O-10 Transparent Pearl over
V-343 Chartreuse



O-11 White Clover over
V-357 Dark Gray

